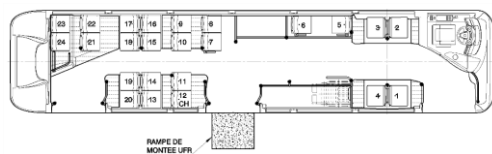


Layout 12m

24 seats + "wheelchair" space (x) driver



27 seats + "wheelchair" space (x) + driver



### WEIGHTS

Gross kerb weight	according to equipment
G.V.W. max permitted weight	20 000 kg

### DIMENSIONS

Overall length	12,050 m
Overhang	2,705 m
Wheelbase	6,120 m
Overall width	2,550 m
Total height, full load	3,350 m
Inside headroom (front part/rear part)	2,384/2,262 m
Slope of the floor (rear part only)	7,2 %
1st step height	
Front door	0,320 m
Center & rear door	0,330/0,340 m
Width of front / center / rear doors	1,200 m
Floor height	0,340 m
Ground clearance, under skirt	0,300 m
Front/rear tracking	2.087/1.869 m
Inner Turning radius	9,095 m
Outer Turning radius	10,890 m
Angle of attack / escape	7,4°/7,2°
BRT version in option (Overall)	12,275 m

## E-WAY FULL ELECTRIC – 12m

### ELECTRICAL ARCHITECTURE

Synchronous electric motor 160 kW (1 minute), 2500 Nm

	NMC (Nickel Manganèse Cobalt) High energy batter	(Lithium-Oxyde Titanate) High power battery
Serial	376 kWh	73 kWh
Option	334, 418, 460 kWh	88 kWh
Charging	Overnight at depot	Opportunity fast charging via Off board pantograph 4 poles pantograph –up to 450 kW
Plug	CCS COMBO 2 (max. 100 kW)	CCS COMBO 2 (max. 100 kW)

### CHASSIS AND STRUCTURE -EXTERIOR TRIM

Self supporting integral structure Anti corrosion treatment of chassis by cathoretic immersion Body structure consisting in 5 panels (front/rear/left/right/ made of welded stainless steel sections and sheet panels Assembling of the 5 panels to the chassis by bolting 12 mm thick plywood floor, protected by phenolic resins on both sides and wax containing resins on ground side Composite front and rear ends, roof and side panels Bonded assembly Gravel resistant protected wheel arches Composite front and rear bumpers in 3 parts  
BRT options:  
GX LINIUM front end  
Wheel covers.

### ACCESS AND DOORS

2 or 3 inward swing/sliding doors. Both leaves of front door are double glazed. Electrical access ramp on the central door. Left and right self-de-frosting rear-view mirrors or motor driven and self-de-frosting rear-view mirrors with integrated flag holders.

### GLAZING -HEATING –COOLING

TSA tinted or Shade Lite panoramic laminated glass windscreen bonded on front face Bonded side windows Driver's window sliding type in front part TSA tinted glass all round or Grey 40 or Venus 35 tinted except driver's window, front door and rear window  
With or without triangular window on platform  
Insulated roof.  
2 air exhausters on rear part of the roof  
HVO or fuel or electric 20 kW or mix HVO/electric or fuel/electric heater  
With or without passenger and/or driver's compartment air conditioning  
With or without additional heater in passenger compartment  
With or without motor driven or hand actuated opaque or translucent roof hatches

### DRIVER'S COMPARTMENT

Adjustable steering wheel (height and angle). Air-suspended driver's seat with adjustment control on right-hand side. VDV instrument panel with warning lamps and control display panel.  
Pivoting door, wall behind the driver with a glazed upper part. Interior rear-view mirrors. Left side and front sun visor. Driver's individual with 2 spotlights, luggage box. Average fuel consumption on dashboard.  
Adjustable steering wheel and dashboard in height and in slope  
With or without antiaggression gate

### INTERIOR TRIM

«wheelchair and pram» space  
Epoxy or stainless-steel stanchions and handrails.  
High wear resistant floor covering up to plinths top. Laminated roof and side panels. Thermo-formed wheel arches. Polyester ceiling arches.  
With or without fire extinguisher

### ELECTRICAL EQUIPMENT

2-off 12 V 225 A/h maintenance-free batteries mounted on a sliding support located in an outside compartment at the vehicle front left-hand side.  
Converter DC/DC 600/24 V  
Passenger compartment lighted by ledsights.  
Door step lighting at door opening. Lighting of driver's compartment, paying position and steps. Electricity-saving system for intensive use whilst engine is off.  
Thermal circuit-breakers.  
Battery re-loading and engine start FENWICK socket  
Front and rear lights with leds: parking lights, stop lights, fog lights, reverse lights and turning lights. Corner marker lights with leds.  
FMS socket  
4 passenger's loudspeakers and 1 driver loudspeaker and 1 outside loudspeaker  
Preparation for front or lateral electronic destination indicator.  
With or without flashing/stop indicators on the top of rear end.  
With or without atmosphere lightings.  
With or without complete radio equipment.  
With or without monoringgong for pedestrian zone.  
With or without Front fog lights  
With or without 24 V plug in engine compartment  
With or without Preparation for ITxPT  
With telematics system

### FRONT AXLE

Front independent wheels.

### REAR AXLE

ZF AV 133  
Axle torque: 7,36 (16x37)

### SUSPENSION

Constant height air suspension  
Kneeling and raising system 72 mm stroke) on vehicle right hand side, controlled from the driving position

### COMPRESSED AIR

Pressure: 10 bars. Electric compressor (output: 400 l/min).  
Single tower air dryer. Manual bleeding on the air tanks. Cyclone air cleaner. Oil separator.

### BRAKES

Service brakes: air controlled disc brakes at the front and at the rear ABS ASR braking system. EBS braking system  
Parking brake and door brake controlled via separate circuits  
Pneumatic parking brake actuated by lack of air, spring chamber on rear wheels.  
Service braking electrical FAE  
Brakes applied by opening of the central door.

### WHEELS AND TYRES

Michelin or Bridgestone  
275/70 R 22.5 tires at the front, twin tires at the rear.  
With or without wheel covers.

### CERTIFICATION

In accordance with the R100 2 Regulation  
In accordance with the appendix 8 of the ECE R107 Regulation and with the appendix 11 of the decree of August 3rd, 2007